

Mobile 3D Profilo- and Visiometer

# TraceIt®

---

## Software Installation

V1.0

Edition: November 2021



INNOWEP GmbH  
Friedrich-Bergius-Ring 11  
D-97076 Würzburg

Tel.: +49 931/322 98-0

Fax: +49 931/322 98-12

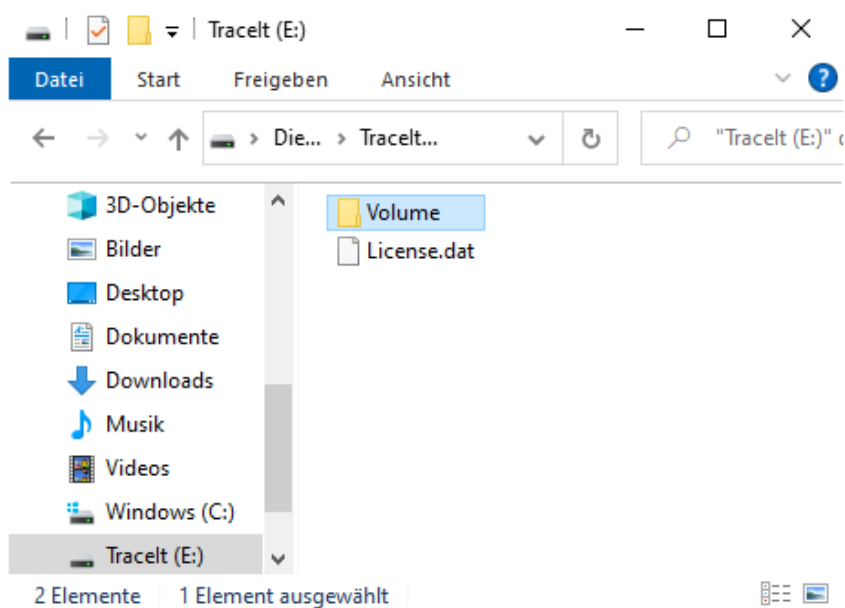
Email: [info@innowep.com](mailto:info@innowep.com)

## Installing the Tracelt® Software

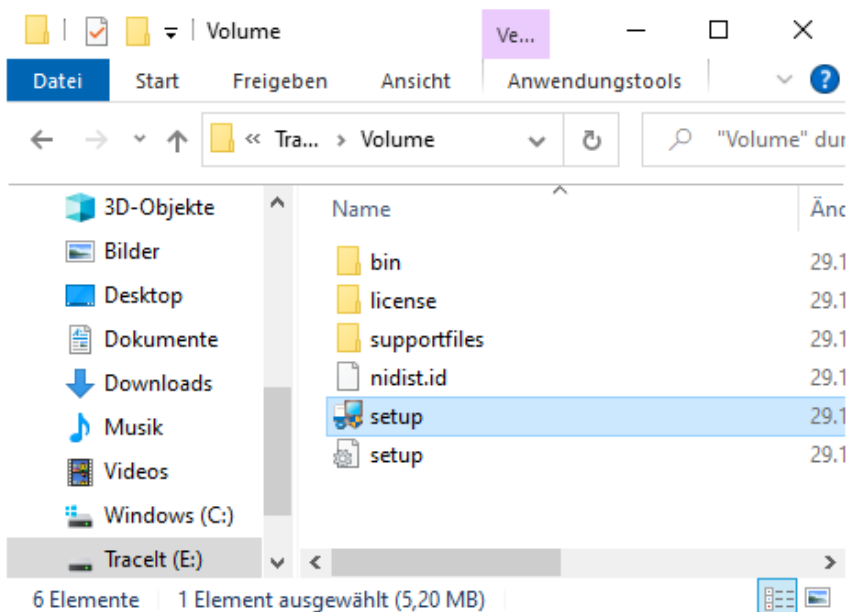
Congratulations, you just received your new Tracelt® license. Thank you for purchasing the Tracelt® Software. This instruction manual will guide you through the installation procedure. For information about the usage of the software or the Tracelt® measurement head please refer to the device manual.

### Installing the software

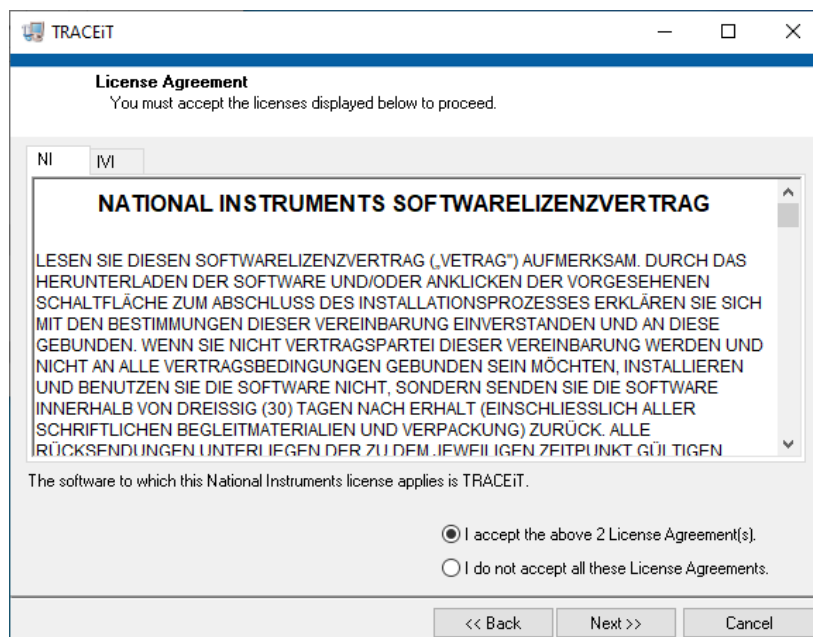
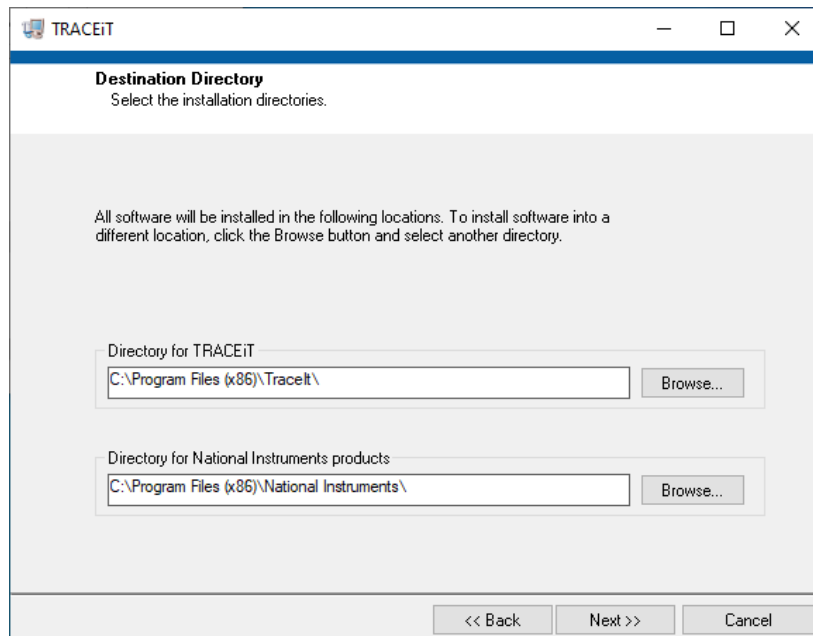
1. Insert the USB thumb drive which you received on shipment on the target computer and open the file explorer.



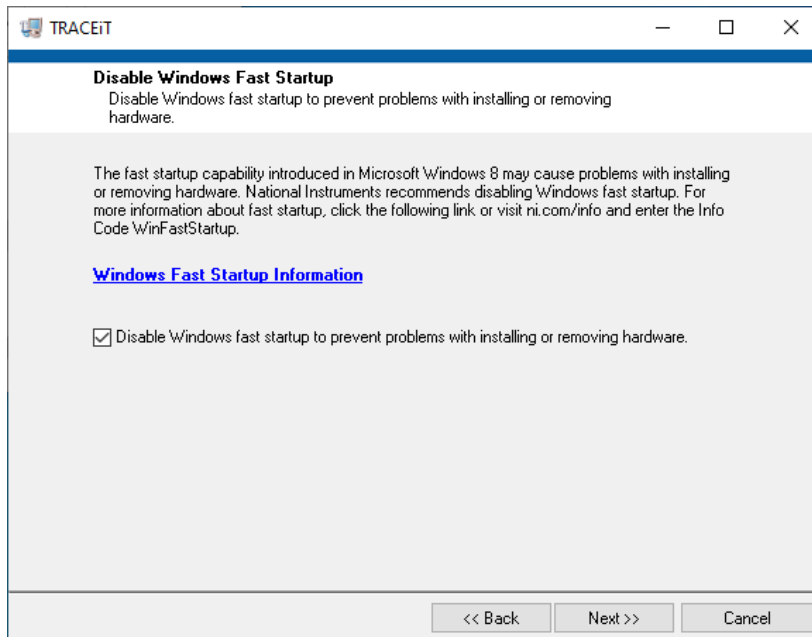
2. Execute the setup.exe, located in the "Volume" folder to start installing the software.



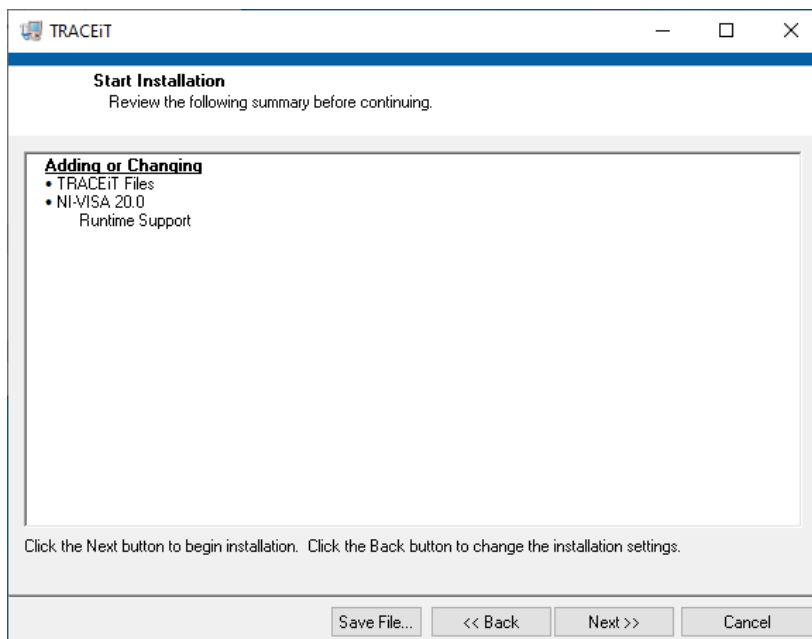
3. Proceed through the installation process by clicking “Next”, accepting the license agreement and click “Next” again.



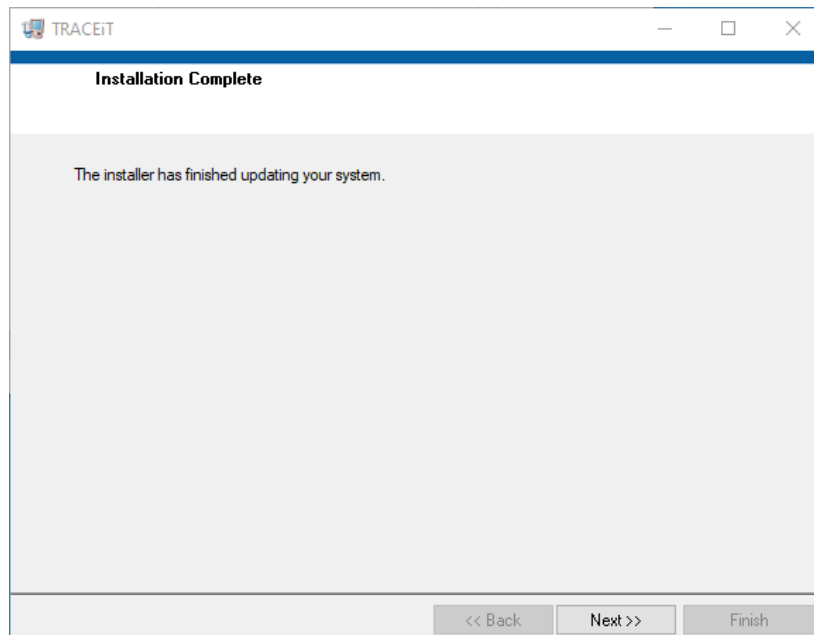
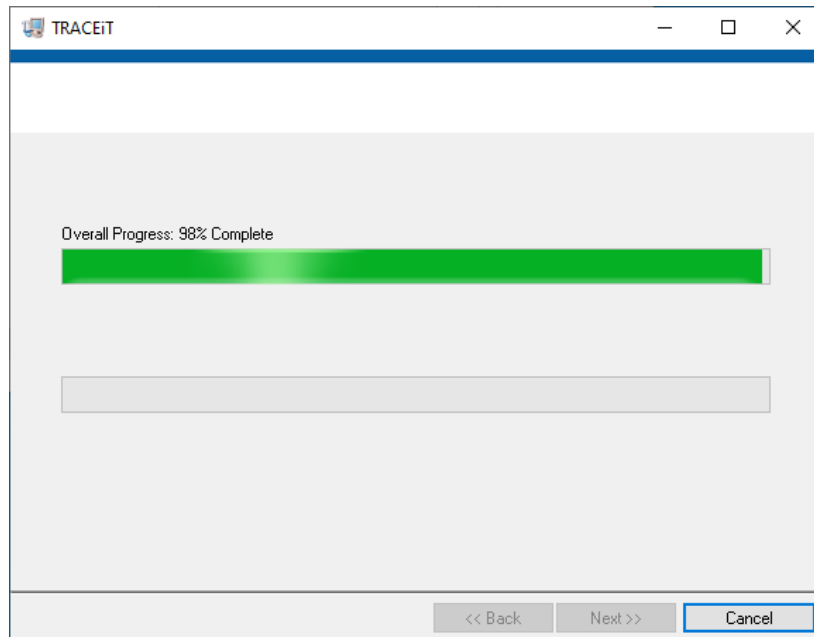
4. Choose whether to disable Windows fast start up (recommended) or not.



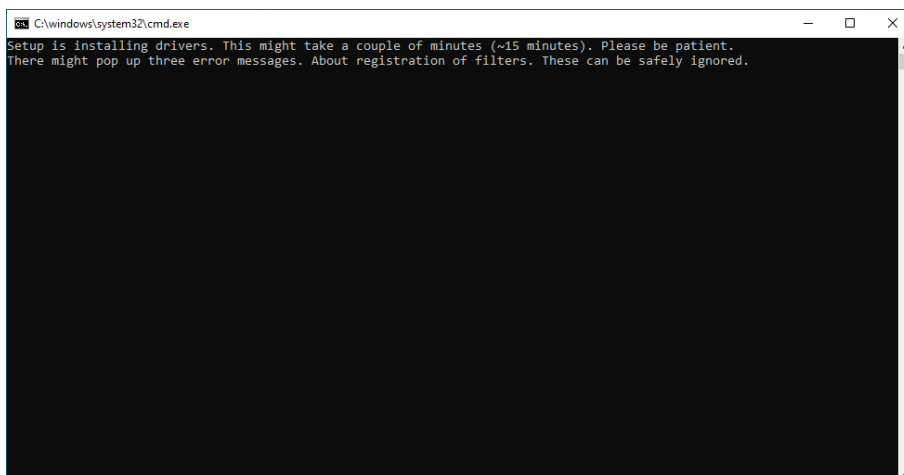
5. Click next again to start the installation.



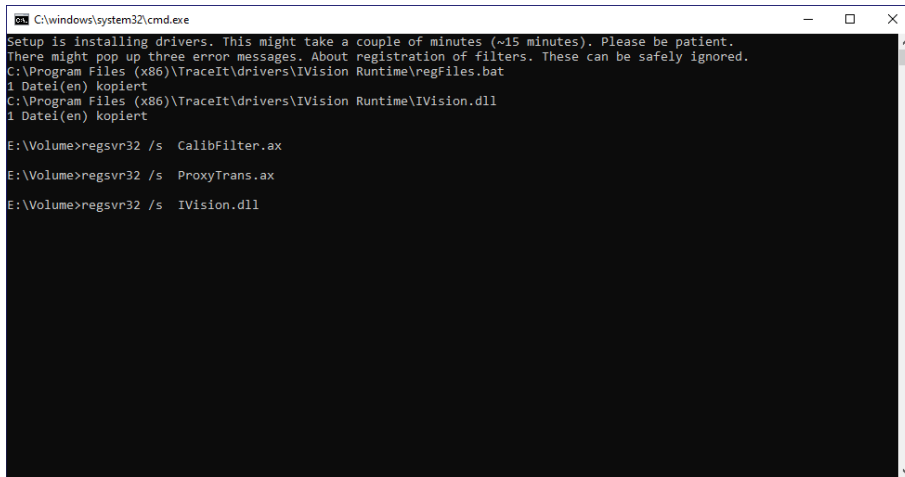
6. Wait till the installation finishes.



7. Click "Next" to start the driver installation.



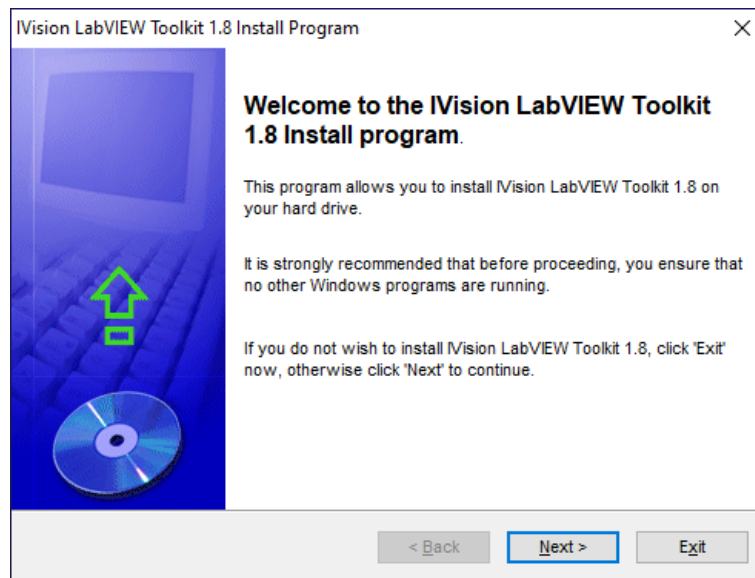
8. Wait till driver installation proceeds.



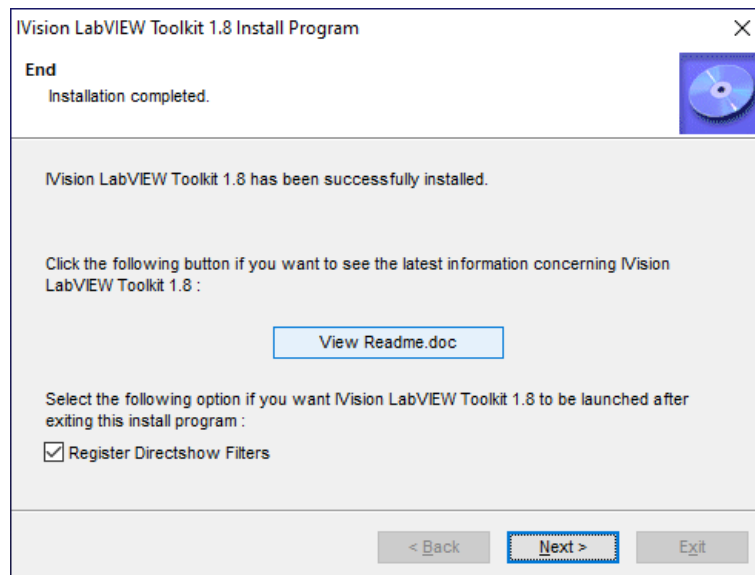
```
C:\windows\system32\cmd.exe
Setup is installing drivers. This might take a couple of minutes (~15 minutes). Please be patient.
There might pop up three error messages. About registration of filters. These can be safely ignored.
C:\Program Files (x86)\TraceIt\drivers\IVision Runtime\regFiles.bat
1 DateI(en) kopiert
C:\Program Files (x86)\TraceIt\drivers\IVision Runtime\IVision.dll
1 DateI(en) kopiert

E:\Volume>regsvr32 /s CalibFilter.ax
E:\Volume>regsvr32 /s ProxyTrans.ax
E:\Volume>regsvr32 /s IVision.dll
```

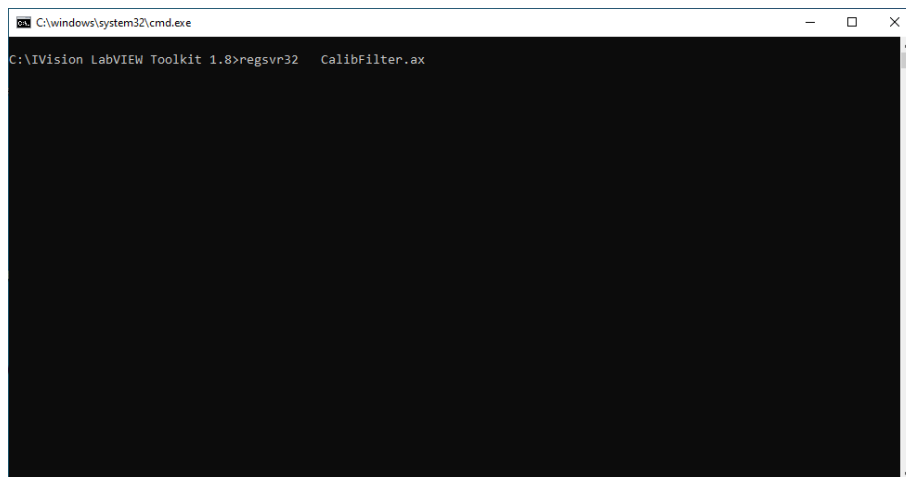
9. When IVision driver is installed, click through the installation process.



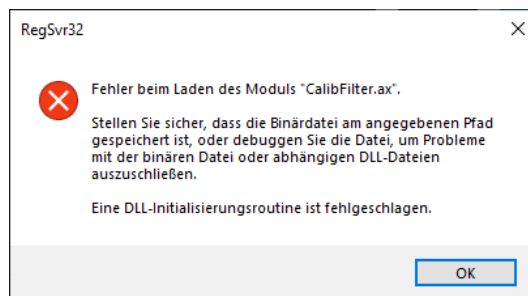
10. When installation finished, make sure to check "Register Directshow Filters" and finish with "Next", followed by "Exit".



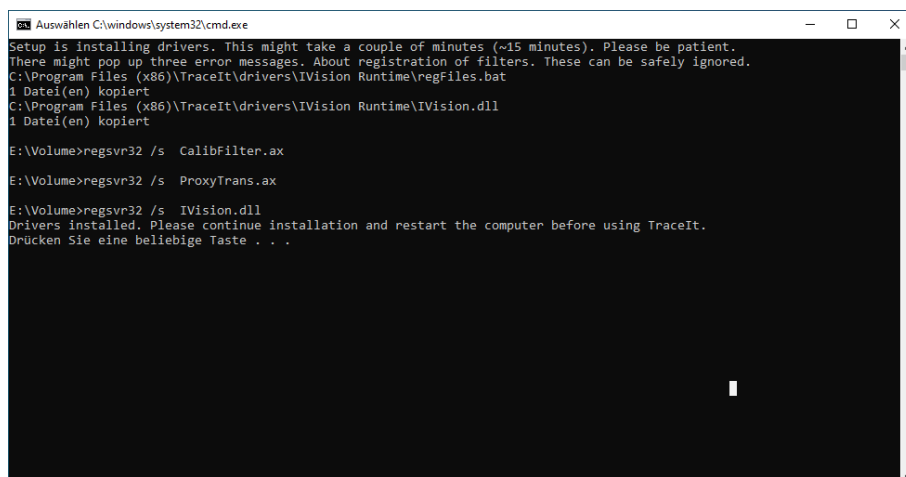
11. Filters are no registered.



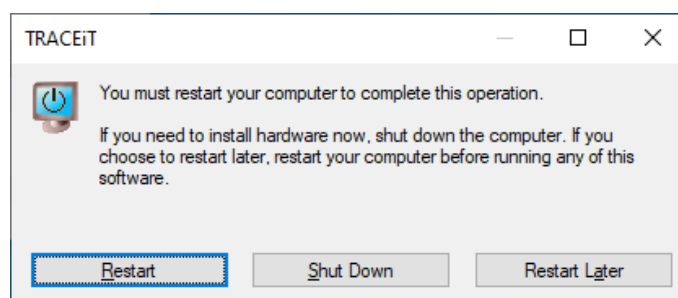
12. In some cases, error messages show up (up to three). Please confirm. They can be safely ignored. The program will work properly anyway.



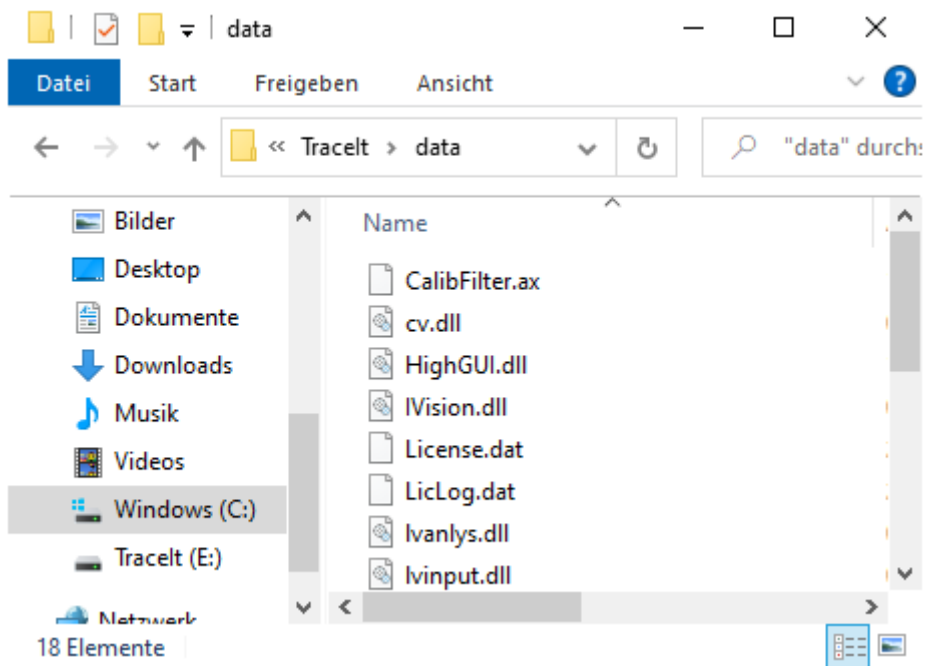
13. When the drivers are installed completely, you can close the dialog by pressing any key.



14. Then the computer needs to be restarted.



After restarting the computer, the license file needs to be copied to the program folder manually. The license file can be found on the USB thumb drive (License.dat) and needs to be pasted to "C:\Program Files (x86)\Tracelt\data\".



## Service Address

|                         |                           |         |                        |
|-------------------------|---------------------------|---------|------------------------|
| <u>Service address:</u> | INNOWEP GmbH              | Tel.:   | +49 931/322 98-0       |
|                         | Friedrich-Bergius-Ring 11 | Fax.:   | +49 931/322 98-12      |
|                         | D-97076 Würzburg          | E-Mail: | info@innowep.com       |
|                         | Germany                   | www:    | http://www.innowep.com |